

## Year 2 Science- Suggested activities for home

In these 3 weeks you can learn about **the places plants grow**, **pollination** and **seed dispersal**. We are also looking at the weather and reflecting on how building on nature changes an environment.

### The Places Plants Grow:

- Watch the video below about the plants you can find outside:  
<https://www.bbc.co.uk/bitesize/topics/zpxnyrd/articles/zw2y34j>
- Try your own Plant Hunt Challenge, either around your garden or on your daily walk. You could take a clipboard or notebook with you to write down what you see and then write it up and draw pictures when you get home. See if you can complete the 6 challenges below!
  1. Find 5 plants you can name. Draw and label them.
  2. Name 2 plants that grow smaller than the height of your knee.
  3. Name 2 plants that grow taller than your knee.
  4. Which plant can you find that is the tallest and estimate with an adult how high it is!
  5. Where have you found lots of plants growing? Why is this a good place for plants to grow?
  6. Where have you found no plants growing? Why is this not a good place for a plant to grow?
- Another day, go for a spring walk. Can you spot these signs of spring? Maybe do a tally chart as you go, to count how many of each you spot. Remember tally marks are drawn as lines and are written in groups of 5 like this...



Birds nests

Bulb shoots

Buds

New green tree leaves

Catkins

Birds

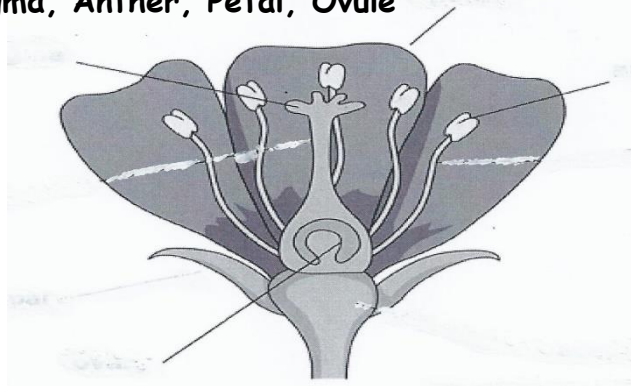
Bluebells

Choose some of your own signs of spring to spot as well. (Parents: This link takes you to a webpage where you can print off a pre-made spotters sheet. Choose the **Pollination KS1** PDF <https://www.stem.org.uk/resources/elibrary/resource/33661/education-pack-spring-pollination#&gid=undefined&pid=2>

### Pollination:

- Watch the video below:  
<https://www.bbc.co.uk/bitesize/topics/zgssgk7/articles/zqbcxfr>
- Using the information in the video or a book you might have, draw a diagram of a flower like the one below and label these parts:

**Stigma, Anther, Petal, Ovule**



- Find a flower in your garden, on a walk or growing in your house. Can you see its anthers and stigma? Anthers and stigmas sometimes look different on different plants. Can you find them on a range of different flowers?
- Watch the videos about how important bees are in pollination and then answer the questions below:  
<https://www.bbc.co.uk/bitesize/topics/zy66fg8/articles/zx4ktv4>  
[https://www.youtube.com/watch?v=zy3r1zlc\\_IU&safe=active](https://www.youtube.com/watch?v=zy3r1zlc_IU&safe=active)

Why do bees want to go to the flowers?

What special powder do bees carry from one flower to the other to help pollination happen?

Why are bees so important for the whole world to survive?

- Design a poster that shows why it's important that we protect our bees.

### Weather:

- Spring is slowly turning to summer. Make a weather chart for five days, however you wish to show the information. It could include symbols and pictures but it should include two weather results a day. It could include temperature, rainfall or just observations through the window.

### Seed Dispersal:

- When seeds are made by a plant, they must find a new patch of soil to grow. Watch the video below and try to spot 5 ways that seeds are dispersed (moved) to a new place. Write a list of the ways you think you've seen.

<https://www.bbc.co.uk/bitesize/clips/znvfb9q>

- Watch the video below, which we watched in a previous week. The 2<sup>nd</sup> half of it explains 4 of the ways that seeds are dispersed. Draw a picture to show each way and label it or write sentences to describe how the seed moves to a new place.

<https://www.bbc.co.uk/bitesize/topics/zpxnyrd/articles/z3wpsbk>

- If you don't have access to a computer, can you tell the 5 ways of seed dispersal from the photos below? Draw a picture and write sentences explaining each way.



- Look for plants, seeds or old seed cases in your garden or on a walk in the park or woods? Which method of dispersal do you think they use?

### Reflection Time:

- Look carefully at the pictures in the book 'Window' by Jeannie Baker on YouTube. <https://www.youtube.com/watch?v=4JLVneJa1Is> How does the view from the window change over time?
- P4C questions: Which environment do you think is better for preserving human life? Which is a better environment to live in? Discuss your thoughts with an adult. Remember to say what you think and give a reason why. Do you change your mind after hearing the grown up's ideas?